

Haringey's Local Plan 2011-2026

Local Plan Emerging Consultation

Stakeholder Presentation
February 2015

Neil Goldberg
Planning Policy



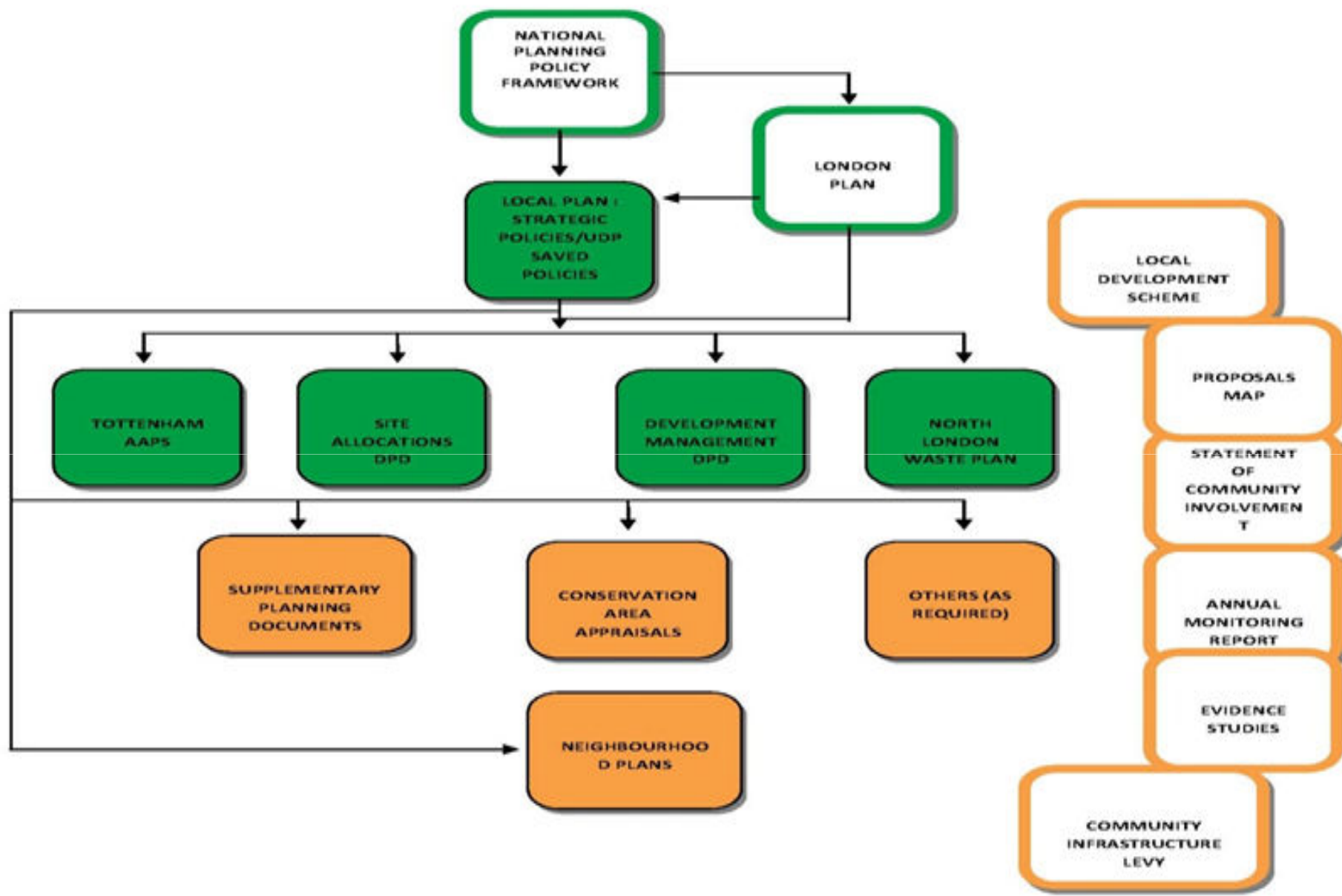
Haringey Council

What is a Local Plan?

- Guides development in the borough
- Requirement to prepare a clear, up to date Local plan which:
 - Conforms to National and Regional Policy;
 - Meets local development needs;
 - Plans positively for the development and infrastructure; and
 - Reflects local people's views on how they wish their Local area to develop.
- The Local Plan comprises a series of documents
- Is used to determine planning applications



Haringey Council



NATIONAL PLANNING POLICY FRAMEWORK

LONDON PLAN

LOCAL PLAN : STRATEGIC POLICIES/UDP SAVED POLICIES

LOCAL DEVELOPMENT SCHEME

TOTTENHAM AAPS

SITE ALLOCATIONS DPD

DEVELOPMENT MANAGEMENT DPD

NORTH LONDON WASTE PLAN

PROPOSALS MAP

STATEMENT OF COMMUNITY INVOLVEMENT

SUPPLEMENTARY PLANNING DOCUMENTS

CONSERVATION AREA APPRAISALS

OTHERS (AS REQUIRED)

ANNUAL MONITORING REPORT

NEIGHBOURHOOD PLANS

EVIDENCE STUDIES

COMMUNITY INFRASTRUCTURE LEVY

Haringey's Local Plan

- Strategic Policies Local Plan (aka Core Strategy) 2013 (Plan Period 2011-2026)
- UDP Saved Policies

Also includes...

- The London Plan 2011 (2015 version emerging)
- National Planning Policy Framework (NPPF)
- Haringey Supplementary Planning Guidance





What are we consulting on?

Why are we consulting?

- Moving from a Unitary Development Plan to Local Plan (previously called 'The Local Development Framework')
- The requirement to prepare an up-to-date Local Plan
- New housing and population growth expectations for Haringey, particularly in Tottenham
- Changes to national and regional planning policies



Haringey Council

Amendments to the Strategic Policies Local Plan 2013

- Not a wholesale review
- balances growth across the whole Borough
- Changes in the overarching planning framework, including at the national and regional level, which affect planning locally
- New housing delivery targets
- New evidence base research



Haringey Council

Emerging Spatial Pattern of Growth in Haringey

- Spatial Pattern of growth
 - Growth Areas – Tottenham Hale & Wood Green (including Haringey Heartlands)
 - Areas of Change – Rest of Tottenham (including Seven Sister Corridor, Northumberland Park)
 - Area of Limited Change – Strategic Brownfield Sites



Haringey Council

Development Management Development Plan Document

- ‘ Haringey Housing Charter’
- Delivering homes to meet housing needs
- Protection of open space
- Securing new employment space and managed protection of existing
- Basement policy
- Protection for public houses
- Restricting Hot food takeaways and betting shops
- Protecting family housing



Haringey Council

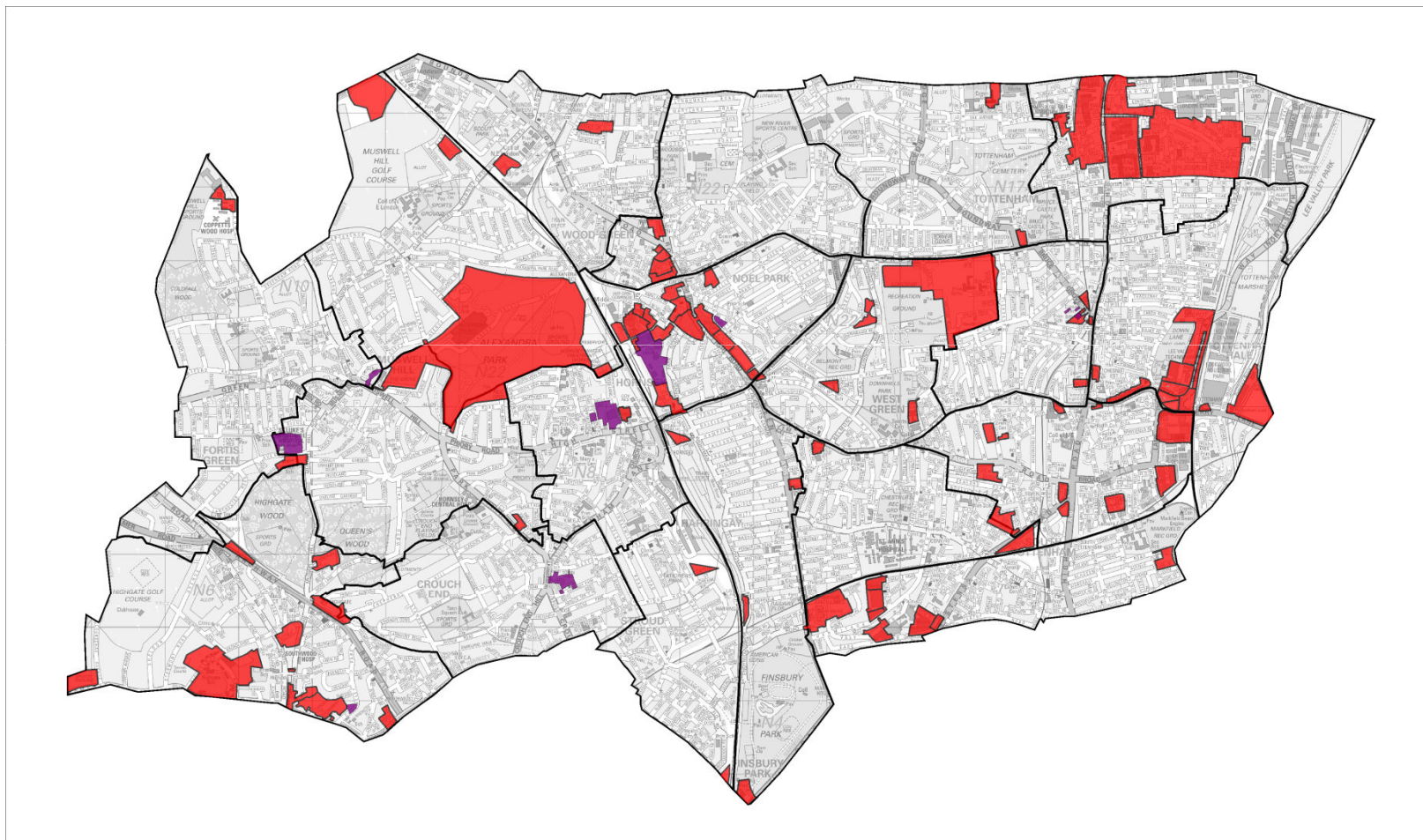
Tottenham Area Action Plan

- 10,000 new homes and 5,000 new jobs
- Maximising opportunities from Crossrail and funding
- Public realm improvements
- Green link to regional park
- New district centre at Tottenham Hale
- 25 Site allocations for Tottenham

Site Allocations Development Plan Document (outside Tottenham)

- 63 allocated sites – delivering 9,000 homes
- 100,000m² of new employment floorspace
- Protecting licensed waste sites
- Reconfirming town centre boundaries
- Identifying locations for taller buildings and protecting other areas from unsuitable development

All emerging Allocated Sites in Haringey.



Next Steps

- 6 week Public Consultation from 9th February – 23rd March 2015.

For more information

- Contact the Planning Policy Team on:

Planning Policy

Level 6, River Park House, 225 High Road, Wood Green, N22 8HQ

Tel 020 8489 1479

LDF@haringey.gov.uk

Or

Neil.goldberg@haringey.gov.uk



Haringey Council